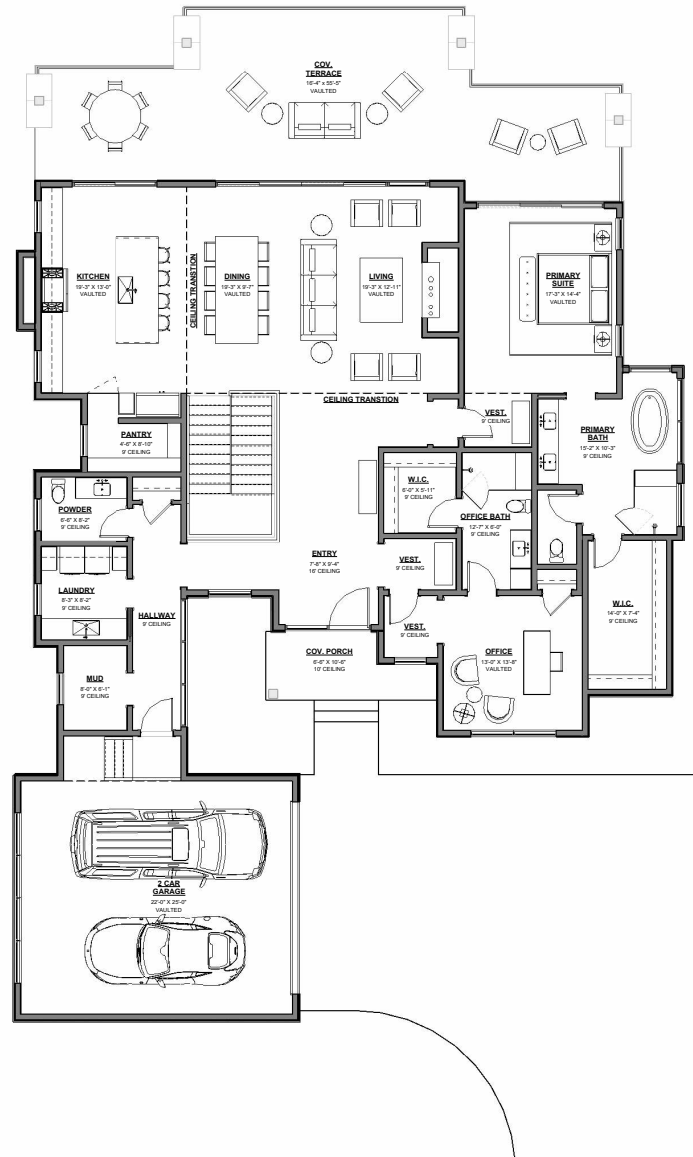


The Sage

3,626 Square Feet | 4 En Suite Bedrooms | 4 Full Baths | 2 Half Baths | 2-Car Garage



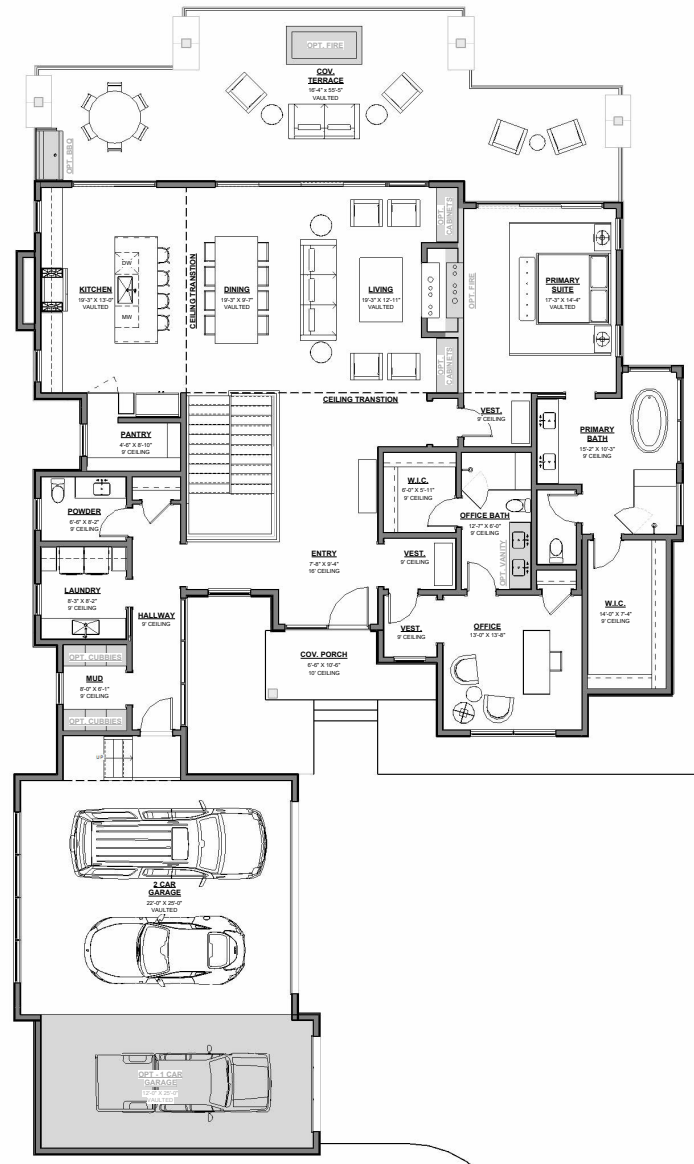
MAIN LEVEL FLOOR PLAN – STANDARD

Floor plans are preliminary. Square footages are approximate and stated in terms of gross square feet. Not all models are available on all lots. This information is not intended to constitute an offer or solicitation. Consult a sales executive for further home option amounts which are applicable to sales price. © 2024 Promontory Development, LLC.



The Sage

4,133 Square Feet (with options) | 5 En Suite Bedrooms | 5 Full Baths | 2 Half Baths | 3-Car Garage



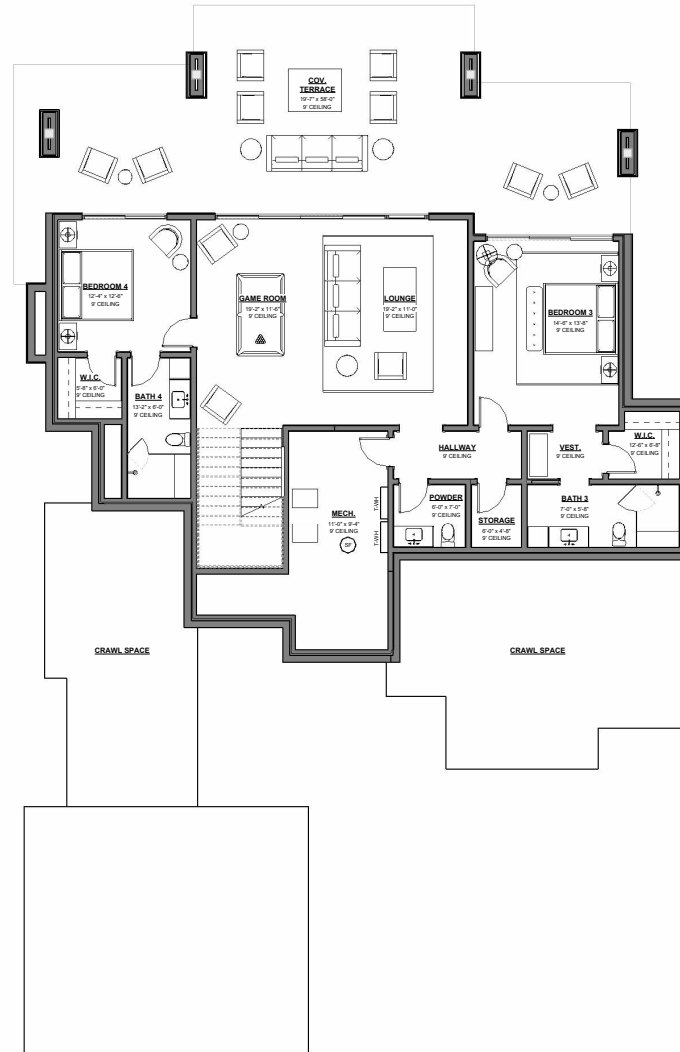
MAIN LEVEL FLOOR PLAN – OPTIONAL

Floor plans are preliminary. Square footages are approximate and stated in terms of gross square feet. Not all models are available on all lots. This information is not intended to constitute an offer or solicitation. Consult a sales executive for further home option amounts which are applicable to sales price. © 2024 Promontory Development, LLC.



The Sage

3,626 Square Feet | 4 En Suite Bedrooms | 4 Full Baths | 2 Half Baths | 2-Car Garage



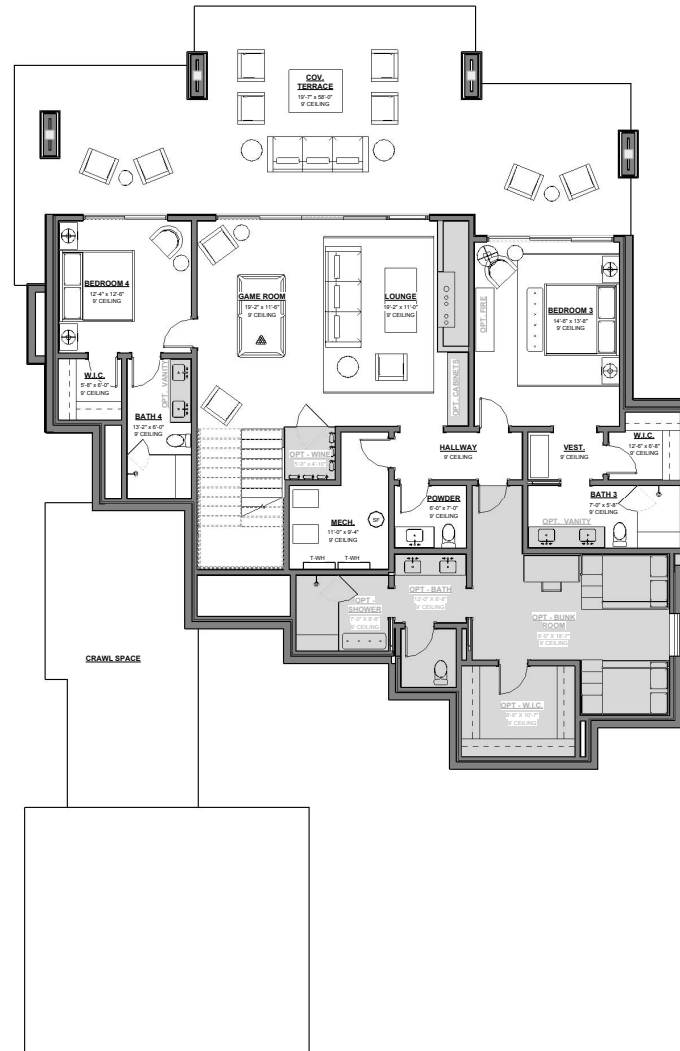
LOWER LEVEL FLOOR PLAN – STANDARD

Floor plans are preliminary. Square footages are approximate and stated in terms of gross square feet. Not all models are available on all lots. This information is not intended to constitute an offer or solicitation. Consult a sales executive for further home option amounts which are applicable to sales price. © 2024 Promontory Development, LLC.



The Sage

4,133 Square Feet (with options) | 5 En Suite Bedrooms | 5 Full Baths | 2 Half Baths | 3-Car Garage



LOWER LEVEL FLOOR PLAN – OPTIONAL

Floor plans are preliminary. Square footages are approximate and stated in terms of gross square feet. Not all models are available on all lots. This information is not intended to constitute an offer or solicitation. Consult a sales executive for further home option amounts which are applicable to sales price. © 2024 Promontory Development, LLC.