

The Sage

ESTATE
BY PROMONTORY HOMES



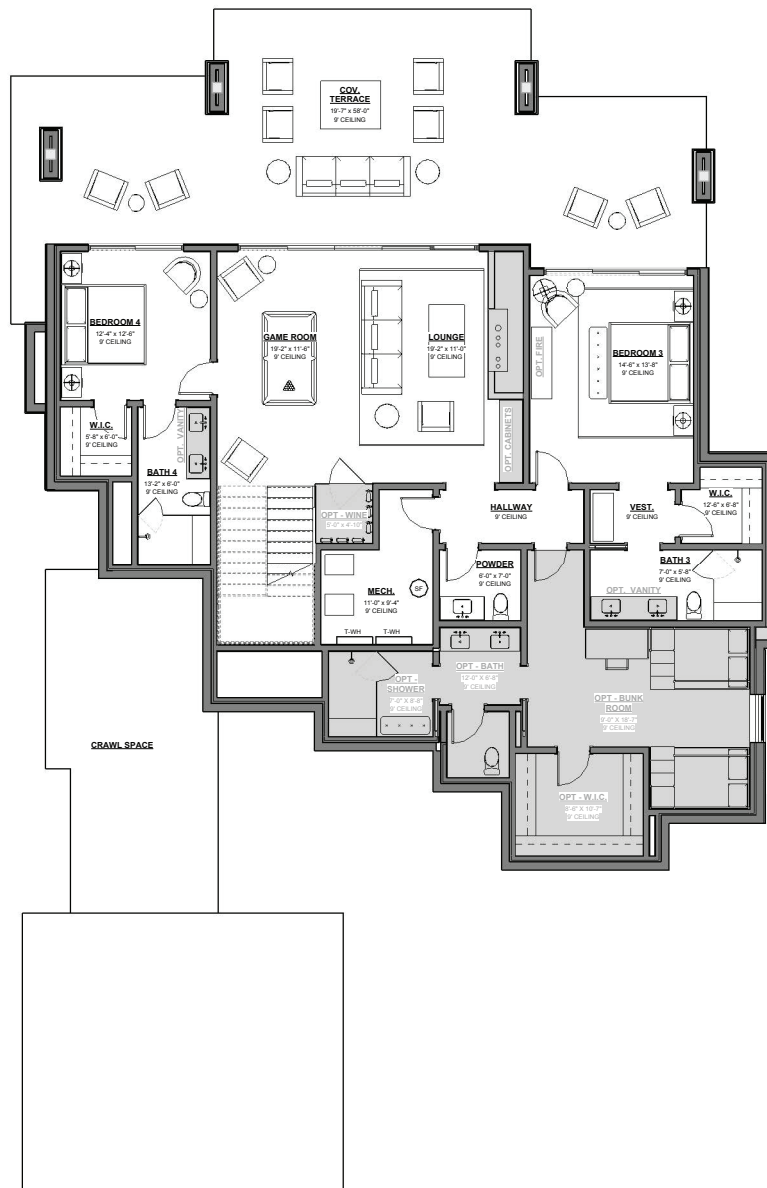
by 4C Design Group
Front exterior of the Sage



The Sage

3,626 Base Square Feet | 4 En Suite Bedrooms | 4 Full Baths | 2 Half Baths | 3-Car Garage
Optional: 5 En Suite Bedrooms | 5 Full Baths

Optional additions for the Sage include an additional bedroom/bunk room, additional bathroom, outdoor fireplace/fire pit, additional indoor fireplace, bar, hot tub/spa, and wine storage.



LOWER LEVEL

Floor plans are preliminary. Square footages are approximate and stated in terms of gross square feet. Not all models are available on all lots. This information is not intended to constitute an offer or solicitation. Consult a sales executive for further home option amounts which are applicable to sales price. © 2024 Promontory Development, LLC.



The Sage

The Sage, built by Promontory HOMES, includes a comprehensive buyer selection process at our Design Center, allowing buyers to customize selections, finishes, and design elements for the perfect dream home without the hassle of a full custom design process.



435.333.4600 | PROMONTORYCLUB.COM

The artistic renderings of the proposed developer's built product are provided for informational purposes to illustrate the general architectural character of proposed product. Details, Finishes, and Colors subject to change. All prices, incentives, locations, descriptions, options, and terms are subject to change without notice. Square footages are approximate. Not all models are available on all lots. Not all options available in all models. Number of steps at garage or front door are subject to site conditions. This information is not intended to constitute an offer or solicitation. ©2025 Promontory Development, LLC. Berkshire Hathaway HomeServices Utah Properties is a member of the franchise system of BHH Affiliates, LLC. Equal Housing Opportunity.

**BERKSHIRE
HATHAWAY** | **UTAH
PROPERTIES**
HOMESERVICES